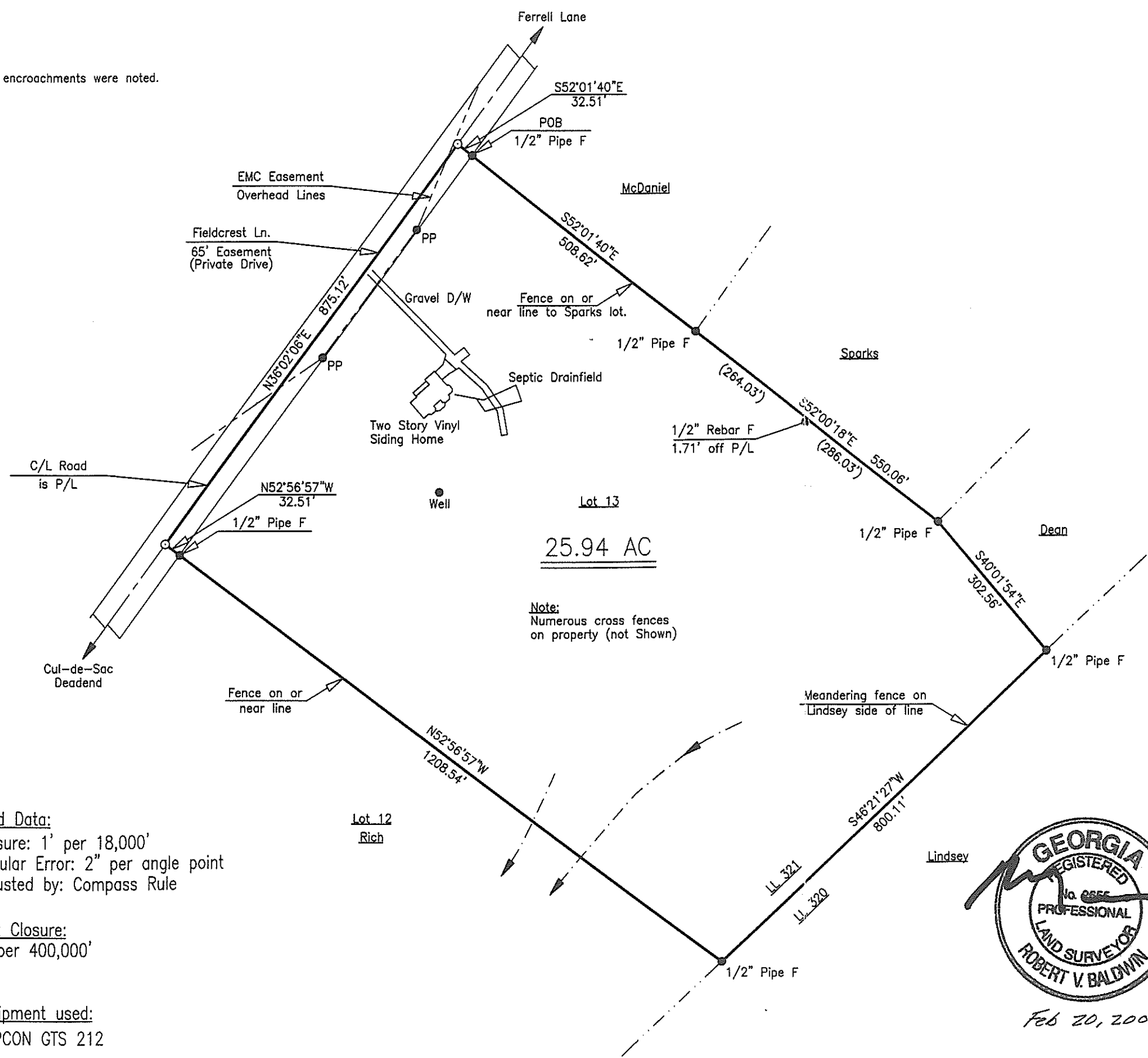
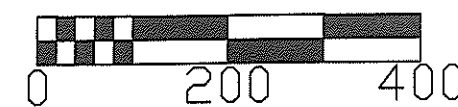
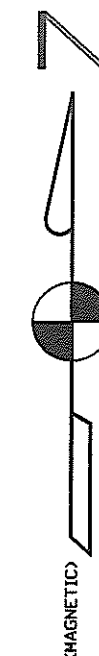


No encroachments were noted.

POB - POINT OF BEGINNING

From a 1/2" Rebar at the intersection of the South R/W of the CSX RR (200' R/W) and the East R/W of Fieldcrest Lane (65' Easement), follow the R/W of Fieldcrest Lane South 863.07' to a 1/2" Pipe and POB.



25.94 AC

Note:
Numerous cross fences on property (not Shown)

Field Data:
Closure: 1' per 18,000'
Angular Error: 2" per angle point
Adjusted by: Compass Rule

Plat Closure:
1' per 400,000'

Equipment used:
TOPCON GTS 212



Feb 20, 2002

Survey For:	
Bradley F. Bailey Jan M. Bailey	
1070 Fieldcrest Lane Lot 13, Fieldcrest Farms, Phase I Land Lot 321 4th Land Dist. 279th GMD Morgan Co., Georgia	
Scale: 1" = 200'	Date: February 15, 2002
R. V. Baldwin PLS#2655 PE#10842 Baldwin Engineering Services 150 W. Washington St. Madison, Georgia 30650 706-342-0191	